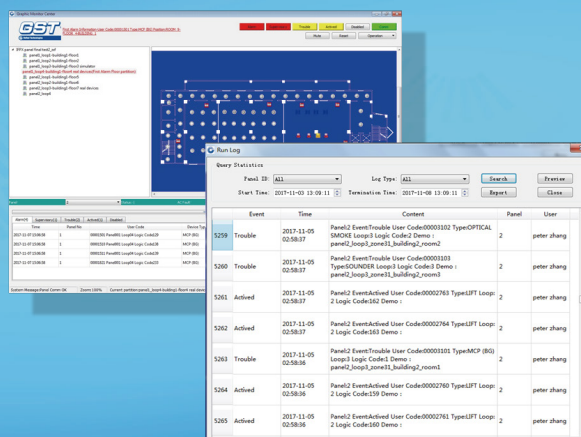


GST-IFPx-GMC

Graphic Monitor Center



Description

GST-IFPx-GMC Graphic Monitor Centre, hereinafter referred to as GMC, is fit for GST-IFP4M serial panels and attached front-end devices. It can communicate between a fire alarm system and control panels. With a beautiful interface and focused graphic messages, the GMC also supports vectorized device icons. It's simple to operate and suitable for different kinds of users.

Technical Specification

- Based on pc, software provides simple, direct and complete user graphics view interface
- Shifting between device layouts of different monitoring zones
- Popup of abnormal information automatically, with devices in alarm, action, fault or disabled condition flashing in different colors
- Multi-level password control
- Complete functions of database management and data backup ensure system safety by minimizing possibility of data loss
- Licensing via USB dongle

System Requirements

- Hardware
 - CPU: Pentium III 1G or above
 - Minimum free hard disk: 10GB
 - Memory: 2GB or above
- Software
 - Windows 7 (IE8.0 or above)

Order Information

Part No.	10105792 GST-IFPx-GMC
	10106185 GST-IFPx-GMC-S
	10106186 GST-IFPx-GMC-M
	10106187 GST-IFPx-GMC-L
Device Name	Graphic Monitor Center

Connection

Connect to GST-IFP4M panel through network cable via RJ45 jack.

IMPORTANT: This publication is a generic version in which product information is shown for informational purposes only and does not constitute a specific commitment or guarantee. We are constantly pursuing the improvement of product technology to improve product performance, for which we reserve the right to adjust the configuration and technical information of the related products without notice. In addition, the description of system performance in this publication applies only to the usual situation. As a result, there may be a variety of unpredictable special circumstances in the real world, so the realization of the relevant product performance will depend on the professional investigation and analysis and the design plan. Please contact us and we will be happy to provide you with professional advice.