

**Features**

- ✧ A pair of input signals. Working mode can be set to normally open, normally closed through P-9910B programmer. Input signal is insulated from loop.
- ✧ Two separate pairs of converting output contacts.
- ✧ Occupying one address. It can be modified through a programmer or fire alarm control panel (FACP).
- ✧ Monitoring power supply.
- ✧ Plug-in structure.

**Description**

With a microprocessor, I-9305 Voice Alarm Zone Control Module can communicate with FACP, monitor power supply, control output, indicator and judge logic state of input signal.

The module is designed to switch between normal broadcasting and voice alarm broadcasting. The module can switch those two channels, receive external answering signal and feed back automatically after switching to fire alarm broadcasting. The switching is successful if the relative information has been transmitted to fire alarm control panel.

**Connection and Cabling**

Fig. 1 shows terminals on the module.

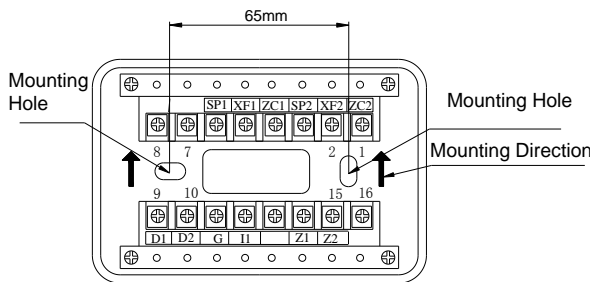


Fig. 1

- D1, D2: 24VDC power, non-polarized
- Z1, Z2: Connecting with loop of FACP, non-polarized
- I1, G: Volt-free input terminal
- ZC1, ZC2: Normal broadcasting input terminal
- XF1, XF2: Fire alarm broadcasting input terminal
- SP1, SP2: Output terminal connecting with speaker

**Recommended Cabling**

1.0mm<sup>2</sup> or above fire cable for Z1, Z2, ZC1, ZC2, XF1, XF2, SP1 and SP2. 1.5mm<sup>2</sup> or above fire cable for 24VDC power line, subject to local codes.



**Installation**

The module is simply plugged onto the base after corresponding terminals are connected.

If the cable conduit is inside the wall, the base is installed onto the Back Box (Fig. 2). If the cable conduit is on the surface of the wall, B-9310 Back Box is available (Fig. 3).

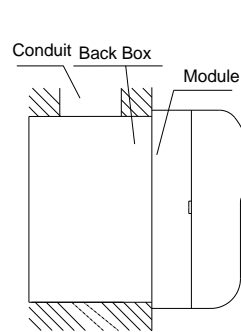


Fig. 2

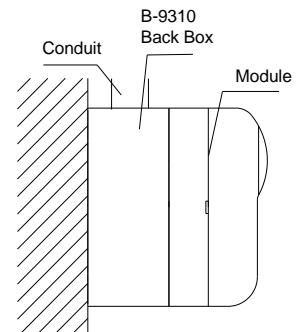


Fig. 3

Note the upward arrow for mounting direction (Fig.1).

**Application**

Address and working mode can be set in field through P-9910B programmer, please refer to *P-9910B Hand Held Programmer Installation and Operation Manual* for specific operation. The working mode of module is defaulted auto feedback (3), which can be modified to normally open (4) or normally closed (7) in field.

The module can be connected to addressable fire alarm broadcasting system, as shown in Fig. 4.

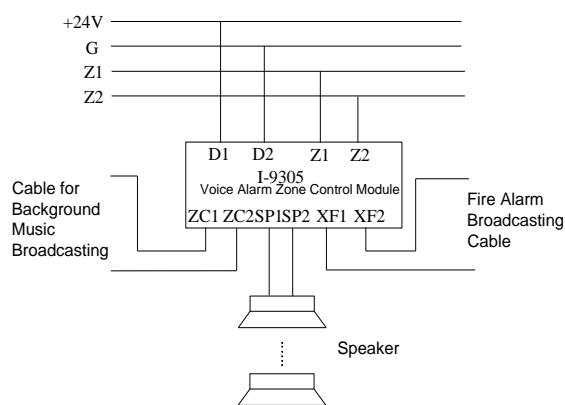


Fig. 4

**Note: Please don't connect contact of the module to AC loop directly, preventing strong AC interference signal from damaging the module or controlled devices.**

### Specification

Operating Voltage	Loop: 24V (16V~28V) Power: 24VDC (20VDC~28VDC)
Standby Current	Loop ≤ 1mA Power ≤ 2mA
Action Current	Loop ≤ 3mA Power ≤ 30mA
Output Control Type	Dry contact output
Programming Method	Electrically addressed, one address within 1~242.
Indicator	Red (Flashes in polling and illuminates in action)
Ingress Protection Rating	IP30
Operating Temperature	-10°C ~ +50°C
Relative Humidity	≤ 95%, non condensing
Material and Color of Enclosure	ABS, white (RAL 9016)
Dimension (L×W×H)	120mm×80mm×43mm (with base)
Weight	About 206g (with base)

### Accessories and Tools

Model	Name	Remark
P-9910B	Hand Held Programmer	Order separately
B-9310	Back Box	Order separately

### Limited Warranty

**GST** warrants that the product will be free of charge for repairing or replacing from defects in design, materials and workmanship during the warranty period. This warranty shall not apply to any product that is found to have been improperly installed or used in any way not in accordance with the instructions supplied with the product. Anybody, including the agents, distributors or employees, is not in the position to amend the contents of this warranty. Please contact your local distributor for products not covered by this warranty.

This Data Sheet is subject to change without notice. Please contact GST for more information or questions.

### Gulf Security Technology Co., Ltd.

No. 80, Changjiang East Road, QETDZ, Qinhuangdao, Hebei, P. R. China 066004

Tel: +86 (0) 335 8502434 Fax: +86 (0) 335 8502532

[service.gst@fs.utc.com](mailto:service.gst@fs.utc.com) [www.gst.com.cn](http://www.gst.com.cn)