

Features

- ◇ Driving 220VAC devices.
- ◇ Providing normally open, normally closed output contacts.
- ◇ Cable checking.
- ◇ Insulated feedback signal from 220VAC devices.
- ◇ Plug-in structure.

Description

C-9302C Interposing Relay Module is non-addressable, designed to start/stop the devices driven by heavy DC and 220VAC. The module is used together with fireman's Control Panel (FCP) featuring cable checking, such as GST014FCP.

Connection and Cabling

Fig. 1 shows terminals on the module.

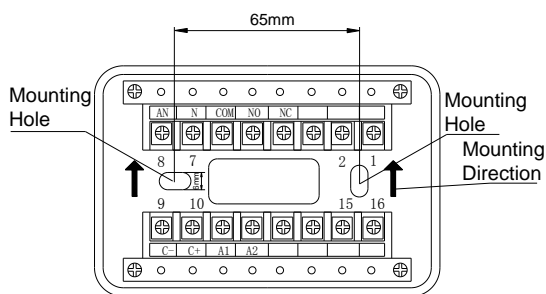


Fig. 1

C+, C-: Input terminals of start command signal (24VDC), connecting with output control terminal of fireman's control panel.

A1, A2: Input terminals of normally open volt-free feedback signal, connecting with volt-free feedback terminals of controlled device.

AN, N: Voltage feedback input terminals (220VAC), connecting with voltage feedback terminals of controlled device.

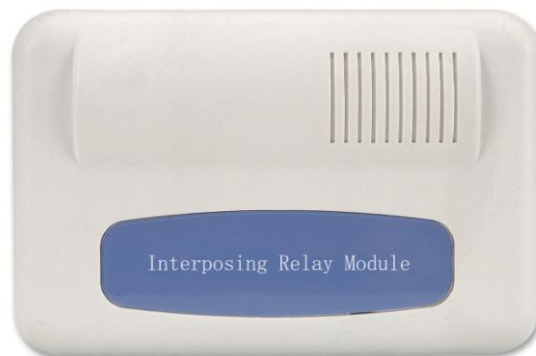
COM, NO, NC: Output control terminals, volt-free normally open, normally closed contacts (5A, 220VAC), connecting with control terminals of the controlled device.

Recommended Cabling

1.5mm² or above fire cable for each terminal, subject to local codes.

Installation

The module is simply plugged onto the base after corresponding terminals are connected.



If the cable conduit is inside the wall, the base is installed onto the Back Box (Fig. 2). If the cable conduit is on the surface of the wall, B-9310 Back Box is available (Fig. 3).

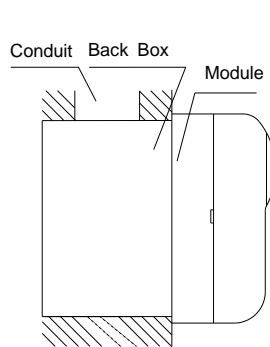


Fig. 2

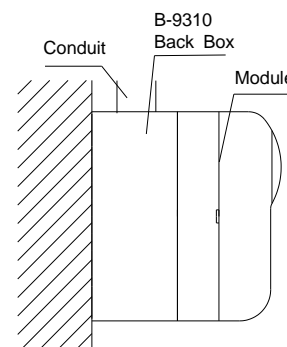


Fig. 3

Note the upward arrow for mounting direction (Fig. 1).

Applications

1. Fig. 4 shows that the module controls the devices by volt-free input mode. .

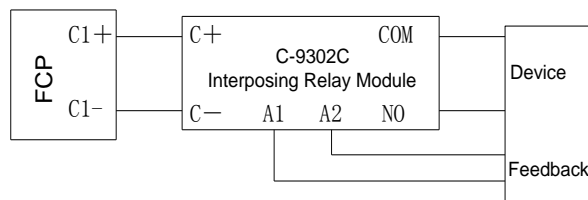


Fig. 4

2. Fig. 5 shows that the module controls the devices by voltage input mode.

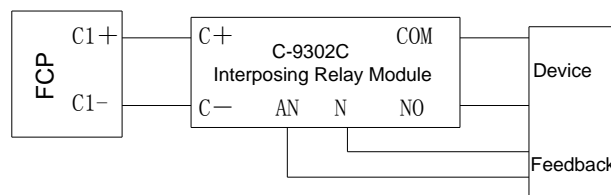


Fig. 5

3. It occupies two channels of fireman's control panel for the control of device needing start/stop. One channel is to start, and the other is to stop. Output device is pulse mode. Fig. 6 shows that two channels of fireman's control panel control the device.

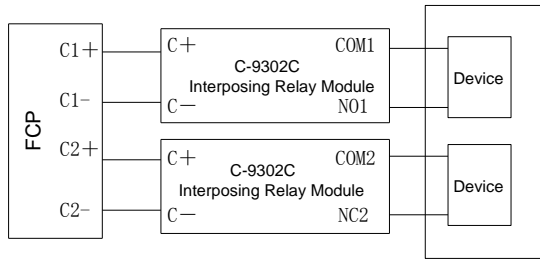


Fig. 6

Note: In Fig. 6, voltage or volt-free feedback can also be connected based on requirements, please refer to Fig. 4 or Fig. 5 for the specific connections.

Specification

| | |
|---------------------------------|-----------------------------|
| Operating Voltage | 24VDC (20VDC~28VDC) |
| Standby Current | ≤4.5mA |
| Action Current | ≤26mA |
| Output Capacity | 5A/220VAC or 5A/24VDC |
| Ingress Protection Rating | IP30 |
| Operating Temperature | -10°C~+50°C |
| Relative Humidity | ≤95%, non condensing |
| Material and Color of Enclosure | ABS, white (RAL 9016) |
| Dimension (L×W×H) | 120mm×80mm×43mm (with base) |
| Weight | About 187g (with base) |

Tools and Accessories

| Model | Name | Remark |
|--------|----------|------------------|
| B-9310 | Back box | Order separately |

Limited Warranty

GST warrants that the product will be free of charge for repairing or replacing from defects in design, materials and workmanship during warranty period. This warranty shall not apply to any product that is found to have been improperly installed or used in any way not in accordance with the instructions supplied with the product. Anybody, including the agents, distributors or employees, is not in the position to amend the contents of this warranty. Please contact your local distributor for products not covered by this warranty.

This Data Sheet is subject to change without notice. Please contact GST for more information or questions.

Gulf Security Technology Co., Ltd.

No. 80, Changjiang East Road, QETDZ, Qinhuangdao, Hebei, P. R. China 066004

Tel: +86 (0) 335 8502434 Fax: +86 (0) 335 8502532

service.gst@fs.utc.com www.gst.com.cn