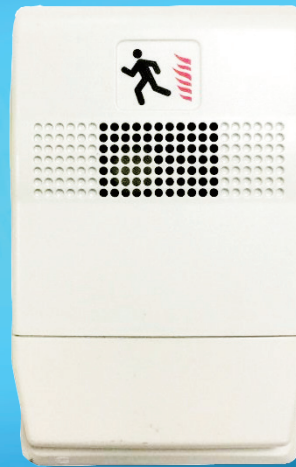


DC-M9414W

Wall Mount Sounder



Description

The DC-M9414 Series Wall Mount Sounder is a fire alarm notification appliance designed for indoor use. DC-M9414W is color WHITE.

Features and Benefits

The sounder is field-configurable for selecting dB output level and sounder signal type.

Certificates and Compliance

- UL listed
- WEEE & RoHS Compliant
- Standards: UL464

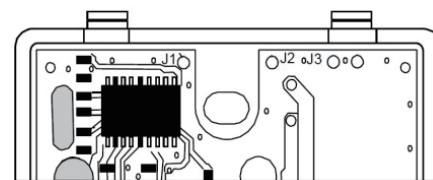
Ordering Information

Part No.	DC-M9414W
Device Name	Wall Mount Sounder
Product No.	60102318

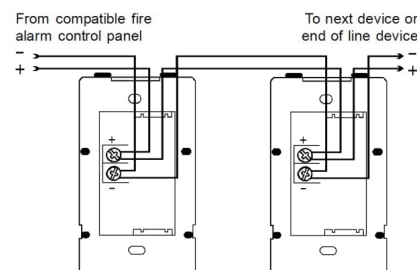
Installation and Appliance

1. Set the sounder features through J2 & J3.

J2	Temporal/steady horn signal output
J3	dB sound output level



2. Cable acceptance: 12 to 18 AWG (0.75 to 2.50 mm²)



Technical Specification

Operating Voltage	24 VDC or 24 VFWR nominal (16-33V)
Operation Current (under 24VDC)	High dBA 0.036A, Low dBA 0.027A
Sound Level (24VDC @ 10ft)	Continuous: High 88.6dBA, Low 83.5dBA Temporal: High 84.4dBA, Low 79.4dBA
Compatible electrical boxes	Single-gang box, 2-1/2 in. (64 mm) deep
Operating Temperature	32 to 120°F (0 to 49°C)
Relative Humidity	0 to 93% noncondensing
Dimension	113 x 68 x 21 (WxHxD, mm)